

ILLINOIS GAMING BOARD

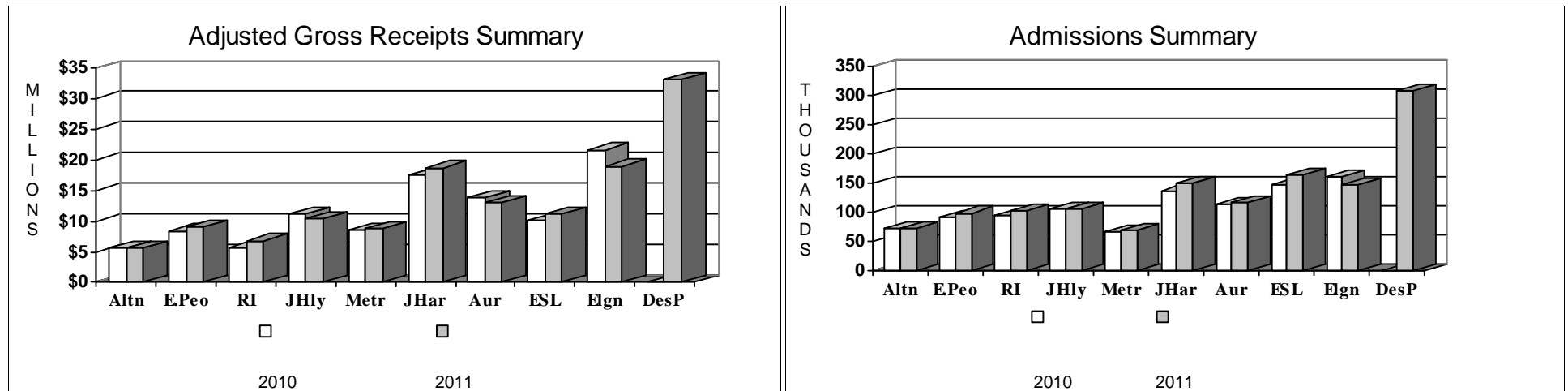
Monthly Riverboat Casino Report

December, 2011

Docksite	Adjusted Gross Receipts (AGR) (000's)	Casino Square Feet	Admissions	AGR Per Square Foot	AGR Per Admission	Tax Allocations (000's) Adm Tax + Wagering Tax	
						State Share	Local Share
Alton	\$5,575	23,000	71,370	\$242	\$78	\$1,397	\$350
East Peoria	\$9,036	26,116	98,625	\$346	\$92	\$3,134	\$550
Rock Island	\$6,855	42,000	102,742	\$163	\$67	\$1,988	\$446
Joliet - Hollywood	\$10,414	50,000	104,828	\$208	\$99	\$3,594	\$626
Metropolis	\$8,720	30,985	68,838	\$281	\$127	\$2,536	\$505
Joliet - Harrah's	\$18,648	39,000	149,080	\$478	\$125	\$8,690	\$1,081
Aurora	\$12,979	41,384	117,243	\$314	\$111	\$5,426	\$766
E St Louis	\$11,165	40,000	164,034	\$279	\$68	\$3,957	\$722
Elgin	\$18,973	29,850	147,721	\$636	\$128	\$8,833	\$1,096
Des Plaines	\$32,998	43,687	308,767	\$755	\$107	\$13,403	\$1,959
Totals	\$135,364	366,022	1,333,248	\$370	\$102	\$52,957	\$8,101

NOTE: - On August 23, 2005 new admission tax rates became effective.

- Local Share = \$1 of the admission tax plus a portion of the wagering tax equal to 5% of the AGR
- State Share = the balance of the admission and wagering taxes.



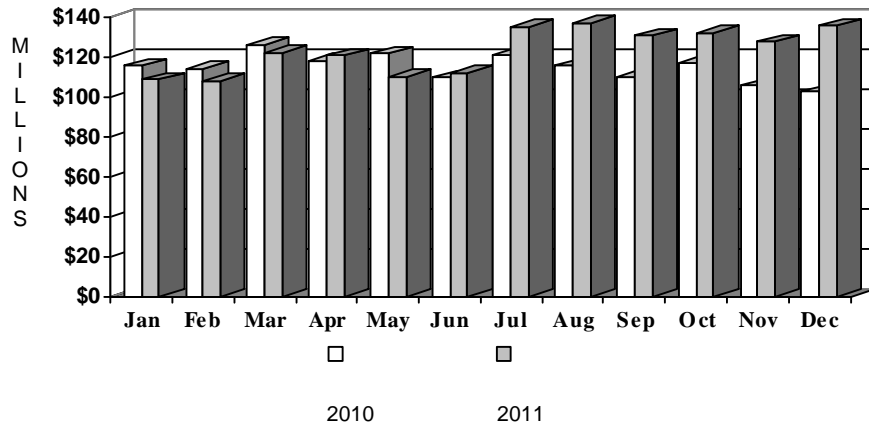
ILLINOIS GAMING BOARD

Monthly Riverboat Casino Report

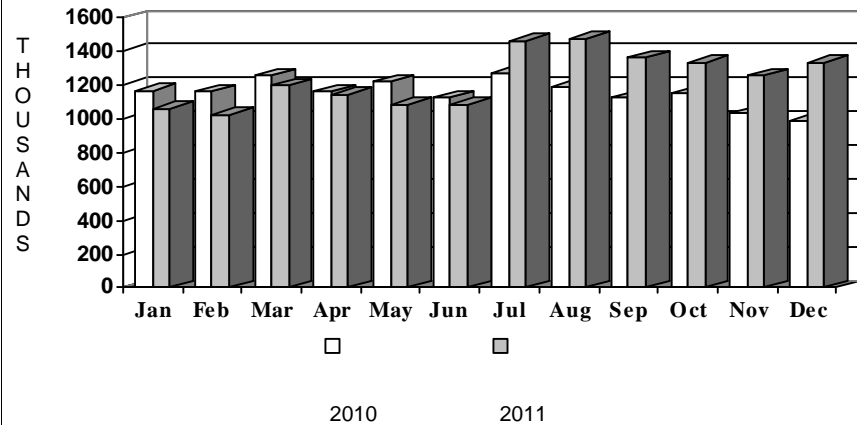
Calendar Year-To-Date Through December, 2011

Docksite	Adjusted Gross Receipts (AGR) (000's)	Casino Square Feet	Admissions	AGR Per Square Foot	AGR Per Admission	Tax Allocations (000's) Adm Tax + Wagering Tax	
						State Share	Local Share
Alton	\$72,955	23,000	943,678	\$3,172	\$77	\$13,938	\$4,591
East Peoria	\$115,571	26,116	1,206,094	\$4,425	\$96	\$26,848	\$6,985
Rock Island	\$85,865	42,000	1,332,379	\$2,044	\$64	\$16,820	\$5,626
Joliet - Hollywood	\$146,245	50,000	1,411,387	\$2,925	\$104	\$37,227	\$8,724
Metropolis	\$95,481	30,985	766,604	\$3,082	\$125	\$19,665	\$5,541
Joliet - Harrah's	\$223,428	39,000	1,885,716	\$5,729	\$118	\$69,939	\$13,057
Aurora	\$173,182	41,384	1,498,609	\$4,185	\$116	\$47,895	\$10,158
E St Louis	\$129,881	40,000	1,946,180	\$3,247	\$67	\$33,000	\$8,440
Elgin	\$256,908	29,850	1,865,402	\$8,607	\$138	\$84,964	\$14,711
Des Plaines	\$177,474	43,687	1,945,895	\$4,062	\$91	\$50,506	\$10,820
Totals	\$1,476,988	366,022	14,801,944	\$4,035	\$100	\$400,803	\$88,651

Adjusted Gross Receipts Summary



Admissions Summary



NOTE: - On August 23, 2005 new admission tax rates became effective.

- Local Share = \$1 of the admission tax plus a portion of the wagering tax equal to 5% of the AGR
- State Share = the balance of the admission and wagering taxes.

ILLINOIS GAMING BOARD

Monthly Riverboat Casino Report

December Comparison

	AGR Comparison to Previous Month (000's)		
Docksite	Dec., 2011	Nov., 2011	% Change
Alton	\$5,575	\$5,601	-0.47%
East Peoria	\$9,036	\$8,642	4.56%
Rock Island	\$6,855	\$6,486	5.69%
Joliet - Hollywood	\$10,414	\$10,014	3.99%
Metropolis	\$8,720	\$7,945	9.75%
Joliet - Harrah's	\$18,648	\$16,891	10.40%
Aurora	\$12,979	\$12,886	0.72%
E St Louis	\$11,165	\$10,135	10.16%
Elgin	\$18,973	\$16,807	12.89%
Des Plaines	\$32,998	\$32,039	2.99%
Totals	\$135,364	\$127,447	6.21%

	AGR Comparison to Same Month Last Year (000's)		
Dec., 2011	Dec., 2010	% Change	
\$5,575	\$5,587	-0.22%	
\$9,036	\$8,426	7.24%	
\$6,855	\$5,797	18.26%	
\$10,414	\$11,238	-7.33%	
\$8,720	\$8,524	2.29%	
\$18,648	\$17,496	6.58%	
\$12,979	\$13,770	-5.75%	
\$11,165	\$10,065	10.92%	
\$18,973	\$21,621	-12.24%	
\$32,998	\$0	100.00%	
\$135,364	\$102,524	32.03%	

	Admission Comparison to Previous Month *		
Docksite	Dec., 2011	Nov., 2011	% Change
Alton	71,370	68,591	4.05%
East Peoria	98,625	92,785	6.29%
Rock Island	102,742	96,161	6.84%
Joliet - Hollywood	104,828	95,784	9.44%
Metropolis	68,838	64,424	6.85%
Joliet - Harrah's	149,080	144,611	3.09%
Aurora	117,243	115,530	1.48%
E St Louis	164,034	150,263	9.16%
Elgin	147,721	128,917	14.59%
Des Plaines	308,767	296,751	4.05%
Totals	1,333,248	1,253,817	6.34%

	Admission Comparison to Same Month Last Year *		
Dec., 2011	Dec., 2010	% Change	
71,370	71,142	0.32%	
98,625	90,786	8.63%	
102,742	94,029	9.27%	
104,828	104,888	-0.06%	
68,838	66,329	3.78%	
149,080	137,510	8.41%	
117,243	113,158	3.61%	
164,034	147,270	11.38%	
147,721	161,275	-8.40%	
308,767	0	100.00%	
1,333,248	986,387	35.16%	

ILLINOIS GAMING BOARD

Statistical Summary

November, 2011

	Comparison to Previous Month			Comparison to Same Month Last Year			Cumulative Comparison - January - November		
	Nov., 2011	Oct., 2011	% Change	Nov., 2011	Nov., 2010	% Change	2011	2010	% Change
AGR (000)'s	\$127,812	\$131,992	-3.17%	\$127,812	\$104,441	22.38%	\$1,342,803	\$1,268,924	5.82%
# Of Table Games *	288.0	289.0	-0.35%	288.0	234.0	23.08%	260.5	234.0	11.34%
Table Drop (000)'s	\$126,167	\$129,857	-2.84%	\$126,167	\$75,905	66.22%	\$1,093,146	\$903,125	21.04%
Table AGR (000)'s	\$21,527	\$19,979	7.75%	\$21,527	\$13,664	57.54%	\$182,590	\$157,161	16.18%
AGR Per Table Per Day	\$2,492	\$2,230	11.73%	\$2,492	\$1,946	28.00%	\$2,258	\$2,011	12.31%
Table AGR %	17.06%	15.39%	10.90%	17.06%	18.00%	-5.22%	16.70%	17.40%	-4.02%
# Of EGD's *	11,293.0	11,276.0	0.15%	11,293.0	10,238.0	10.30%	10,612.8	10,301.7	3.02%
EGD Handle (000)'s	\$1,238,087	\$1,307,104	-5.28%	\$1,238,087	\$1,129,161	9.65%	\$13,796,513	\$13,829,608	-0.24%
EGD AGR (000)'s	\$106,284	\$112,014	-5.12%	\$106,284	\$90,777	17.08%	\$1,160,213	\$1,111,763	4.36%
AGR Per EGD Per Day	\$314	\$320	-2.10%	\$314	\$296	6.14%	\$352	\$323	9.04%
EGD AGR %	8.58%	8.57%	0.17%	8.58%	8.04%	6.78%	8.41%	8.04%	4.61%
Admissions	1,253,817	1,332,467	-5.90%	1,253,817	1,029,788	21.75%	13,468,696	12,848,027	4.83%
Casino Square Feet	366,022	366,022	0.00%	366,022	322,335	13.55%	366,022	322,335	13.55%
AGR Per Admission	\$101.94	\$99.06	2.91%	\$101.94	\$101.42	0.51%	\$99.70	\$98.76	0.95%
AGR Per Square Foot	\$349.19	\$360.61	-3.17%	\$349.19	\$324.02	7.77%	\$3,668.64	\$3,936.66	-6.81%

* Weighted Average

Calendar Year-To-Date (000's)

<i>Docksite</i>	<i>Start Date</i>	<i>Table AGR</i>			<i>EGD AGR</i>		
		2011	2010	% Change	2011	2010	% Change
Alton	September 11, 1991	\$3,482	\$3,635	-4.22%	\$64,011	\$68,136	-6.06%
East Peoria	November 20, 1991	\$12,404	\$12,179	1.85%	\$94,031	\$94,665	-0.67%
Rock Island	March 11, 1992	\$5,871	\$5,528	6.19%	\$73,114	\$68,096	7.37%
Joliet - Hollywood	June 17, 1992	\$17,740	\$17,206	3.11%	\$118,294	\$115,010	2.86%
Metropolis	February 23, 1993	\$11,129	\$14,561	-23.57%	\$75,920	\$89,811	-15.47%
Joliet - Harrah's	May 04, 1993	\$21,177	\$23,960	-11.62%	\$183,934	\$204,962	-10.26%
Aurora	June 17, 1993	\$21,033	\$18,361	14.56%	\$139,316	\$148,912	-6.44%
E St Louis	June 23, 1993	\$14,319	\$15,729	-8.96%	\$104,695	\$102,673	1.97%
Elgin	October 06, 1994	\$40,670	\$46,001	-11.59%	\$197,562	\$219,499	-9.99%
Des Plaines	July 15, 2011	\$34,765	\$0	100.00%	\$109,338	\$0	100.00%
<i>Totals</i>		\$182,590	\$157,161	16.18%	\$1,160,213	\$1,111,763	4.36%

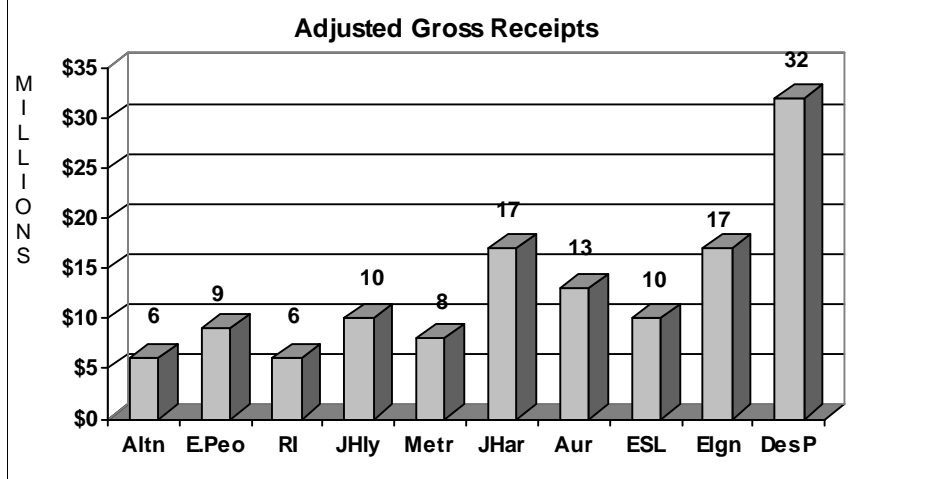
ILLINOIS GAMING BOARD

Docksite Detail November, 2011

	Alton	E. Peoria	Rock Island	Joliet Hollywood	Metropolis	Joliet Harrah's	Aurora	E.St. Louis	Elgin	DesPlaines Rivers	Totals
AGR (000)'s	\$5,601	\$8,641	\$6,479	\$10,024	\$7,916	\$16,868	\$12,865	\$10,387	\$16,798	\$32,234	\$127,812
# Of Table Games *	15	26	29	21	28	33	27	27	34	48	288
Table Drop (000)'s	\$1,582	\$5,968	\$2,748	\$10,292	\$5,084	\$11,654	\$10,040	\$7,416	\$14,830	\$56,554	\$126,167
Table AGR (000)'s	\$317	\$991	\$451	\$1,083	\$1,107	\$1,028	\$1,641	\$1,489	\$2,981	\$10,440	\$21,527
AGR Per Table Per Day	\$704	\$1,271	\$518	\$1,719	\$1,317	\$1,038	\$2,026	\$1,839	\$2,922	\$7,250	\$2,492
Table AGR %	20.03%	16.61%	16.40%	10.53%	21.77%	8.82%	16.34%	20.08%	20.10%	18.46%	17.06%
# Of EGD's *	1,052	1,174	1,091	1,177	1,158	1,138	1,172	1,160	1,127	1,044	11,293
EGD Handle (000)'s	\$66,751	\$89,365	\$71,494	\$95,632	\$63,479	\$194,617	\$122,931	\$136,808	\$182,534	\$214,476	\$1,238,087
EGD AGR (000)'s	\$5,284	\$7,650	\$6,028	\$8,940	\$6,810	\$15,840	\$11,224	\$8,898	\$13,817	\$21,794	\$106,284
AGR Per EGD Per Day	\$167	\$217	\$184	\$253	\$196	\$464	\$319	\$256	\$409	\$696	\$314
EGD AGR %	7.92%	8.56%	8.43%	9.35%	10.73%	8.14%	9.13%	6.50%	7.57%	10.16%	8.58%
Admissions	68,591	92,785	96,161	95,784	64,424	144,611	115,530	150,263	128,917	296,751	1,253,817
Casino Square Feet	23,000	26,116	42,000	50,000	30,985	39,000	41,384	40,000	29,850	43,687	366,022
AGR Per Admission	\$82	\$93	\$67	\$105	\$123	\$117	\$111	\$69	\$130	\$109	\$102
AGR Per Square Foot	\$244	\$331	\$154	\$200	\$255	\$433	\$311	\$260	\$563	\$738	\$349
State Share of Taxes	\$1,397,389	\$2,888,892	\$1,756,010	\$3,446,226	\$2,313,716	\$7,284,540	\$5,184,222	\$3,594,535	\$7,820,989	\$11,006,281	\$46,692,800
Local Share of Taxes	\$348,637	\$524,893	\$420,463	\$596,500	\$461,672	\$989,154	\$759,828	\$657,033	\$969,267	\$1,898,717	\$7,626,164

*Note Based on weighted average

<i>Table Game</i>	<i>Number of Units*</i>	<i>Adjusted Gross Receipts</i>
BlackJack / 21	138	\$8,176,014
Craps	25	\$4,595,738
Roulette	25	\$2,765,640
Big Six	0	\$0
Baccarat	0	\$0
Mini-Baccarat	16	\$2,056,730
Let It Ride	2	\$109,657
Let It Ride Bonus	3	\$129,692
Caribbean Stud Poker	8	\$307,516
Poker	40	\$1,321,303
Three Card Poker	18	\$1,137,282
Four Card Poker	3	\$244,963
Pai Gow Poker	2	\$149,048
Texas Hold-em Bonus	4	\$244,950
Mississippi Stud	4	\$288,696
Total	288	\$21,527,226



<i>EGD</i>	<i>Number of Units*</i>	<i>Adjusted Gross Receipts</i>
1 Cent	4416	\$34,492,049
2 Cent	1804	\$21,025,140
5 Cent	713	\$6,472,972
10 Cent	48	\$568,688
25 Cent	1852	\$15,586,545
50 Cent	157	\$1,037,355
\$1.00	1951	\$22,493,639
\$2.00	6	\$37,526
\$5.00	267	\$3,723,493
\$10.00	35	\$547,440
\$25.00	36	\$383,501
\$50.00	2	\$15,450
\$100.00	6	(\$99,500)
Total	11293	\$106,284,297

ILLINOIS GAMING BOARD

Monthly Riverboat Casino Report

November, 2011

EGD AGR To Handle Percentages

	Alton		East Peoria		Rock Island		Joliet - Hollywood		Metropolis		Joliet - Harrah's		Aurora		E St Louis		Elgin		Des Plaines		Totals	
	#EGD's	%	#EGD's	%	#EGD's	%	#EGD's	%	#EGD's	%	#EGD's	%	#EGD's	%	#EGD's	%	#EGD's	%	#EGD's	%	#EGD's	%
1 Cent	622	10.97%	670	11.86%	700	10.59%	419	13.07%	555	13.08%	207	13.43%	331	12.57%	602	10.54%	103	13.09%	207	13.98%	4416	12.02%
2 Cent			45	11.51%			302	12.43%	30	10.79%	438	12.88%	273	11.82%			331	12.21%	385	12.81%	1804	12.54%
5 Cent	81	6.01%	109	7.85%	54	6.67%	40	7.89%	49	9.69%	77	12.63%	60	11.88%	92	6.23%	95	11.65%	56	11.72%	713	9.28%
10 Cent							9	5.60%					10	6.16%	23	4.23%	6	10.18%			48	5.54%
25 Cent	165	5.07%	191	6.91%	158	5.19%	223	6.14%	260	9.18%	200	5.82%	179	7.01%	236	4.81%	130	6.40%	110	7.50%	1852	6.26%
50 Cent	17	5.11%	2	8.22%	12	6.62%	13	9.00%	8	6.81%	10	13.37%	29	11.57%	26	4.16%	40	7.86%			157	7.67%
\$1.00	138	6.57%	119	5.71%	127	5.42%	147	7.11%	221	8.35%	174	4.87%	269	6.50%	143	4.81%	367	5.90%	246	8.53%	1951	6.41%
\$2.00																6	5.98%			6	5.98%	
\$5.00	21	4.01%	29	5.09%	32	4.58%	17	4.84%	25	7.09%	28	6.03%	17	6.32%	33	3.09%	34	4.33%	31	7.74%	267	5.45%
\$10.00	4	10.13%	5	3.96%	4	5.42%	4	10.42%	6	14.32%	1	7.44%			1	3.25%	7	3.77%	3	9.26%	35	6.93%
\$25.00	4	2.69%	4	-1.96%	4	11.92%	2	2.41%	4	17.47%	2	16.01%	4	12.01%	2	0.17%	6	3.60%	4	4.04%	36	4.09%
\$50.00														2	0.59%					2	0.59%	
\$100.00							1	21.93%			1	-54.01%					2	-6.99%	2	5.94%	6	-9.40%

Table AGR To Drop Percentages

	Alton		East Peoria		Rock Island		Joliet - Hollywood		Metropolis		Joliet - Harrah's		Aurora		E St Louis		Elgin		Des Plaines		Totals	
	#Tables	%	#Tables	%	#Tables	%	#Tables	%	#Tables	%	#Tables	%	#Tables	%	#Tables	%	#Tables	%	#Tables	%	#Tables	%
BlackJack / 21	9	10.31%	12	10.62%	15	10.49%	10	14.66%	15	18.39%	13	-9.18%	11	12.06%	14	19.96%	16	17.42%	23	15.20%	138	13.15%
Craps	2	32.80%	2	20.92%	2	19.63%	2	8.97%	2	24.92%	2	20.93%	2	18.43%	4	18.23%	3	17.38%	4	26.74%	25	21.69%
Roulette	1	32.65%	2	25.26%	2	24.42%	2	20.97%	2	30.65%	2	26.13%	4	24.93%	3	20.43%	3	19.82%	4	24.40%	25	23.86%
Mini-Baccarat			1	42.88%			1	3.28%	1	21.84%	1	16.76%	1	-112.40%	2	22.94%	1	17.22%	8	15.25%	16	13.81%
Let It Ride			1	27.49%							1	31.78%									2	30.31%
Let It Ride Bonus									2	29.74%									1	21.29%	3	24.18%
Caribbean Stud Po	1	38.82%	1	32.75%	1	-7.46%	1	-53.09%					1	27.78%	1	36.85%	1	20.77%	1	30.00%	8	18.48%
Three Card Poker	2	17.14%	2	29.46%	1	17.65%	1	17.74%	2	20.68%	2	25.42%	2	25.34%	2	17.72%	2	21.38%	2	24.68%	18	22.53%
Four Card Poker							1	8.05%			1	19.23%							1	20.08%	3	17.97%
Pai Gow Poker																			2	24.74%	2	24.74%
Texas Hold-em Bo					1	32.15%					1	20.48%			1	21.76%			1	24.11%	4	22.94%
Mississippi Stud					1	24.66%					2	22.86%							1	18.62%	4	21.10%

Note: Poker has been excluded from this report. Because poker is competition between patrons, the table AGR to drop percent is not a relevant comparison.